



# Access Statement

## Introduction

Cohort Educational Trips offers high quality residential accommodation in our 60 bed / 12 roomed building. We aim to cater for the needs of our guests as best as possible and this Access Statement informs Trip Organisers and future group leaders of our facilities and how we may (or may not) be able to accommodate them.

We are based in a Grade II listed old Wesleyan Chapel, across two different buildings on two levels (ground level and first floor). Due to the awkward nature, size and shape of this old building we have limited disabled access and facilities.

St Ives is very hilly, with steps and/or hill walking required to access many parts of the town. However, as we are centrally located the journey between our building and the town centre (harbour front) is approximately a 5-8 minute gentle downhill walk.

## Pre-Arrival

- St Ives train and bus station are located in roughly the same place. The bus station being a short uphill walk from the train station. Both are a 6-10 minute walk from Cohort which includes a short, sharp downhill walk
- There are local taxi firms that can be booked to bring you to our building
- The nearest airport is located in Newquay which is 39 miles by car (approx 55 minutes). There is no easy public transport access from the airport to St Ives; a journey by bus or train could take between 2-3 hours
- We work with a local minibus and coach firm who can organise pickups and drop offs from anywhere in the UK
- For all queries please contact your Cohort Trip Coordinator

## Arrival and Parking Facilities

- There is limited 30 minute street parking at the front of the building for bag drop-off (street name: The Stennack). These spaces are hard to come by during peak season so your coach driver may not be able to stop here
- Coaches can also temporarily park up the road in a bus stop lay-by for drop-off
- At the front of the building there are **2 steps** up to the front porch way and main entrance. The front entrance is a manually opened single front door (760mm wide), which opens towards you
- The front door is accessible between 9am – 9pm. Access through this door outside these times is via a valid room key-card
- For large and all primary school groups once you have checked in the front main entrance is kept locked throughout your stay with access via a valid room key-card only
- There are 3 car parks nearby. Each car park is payable 24hr/day.
  - The Stennack car park – 2 minute walk
  - Park Avenue car park – 4 minute walk
  - Trenwith car/coach park – 8-10 minute walk
- Short wheel base mini-buses can park at all the above car parks
- Long-wheel base minibuses and coaches can only park at Trenwith car/coach park
- There is no free parking in the vicinity of the building
- Dogs and other pets are not allowed in the building



## Main Entrance and Reception/lounge

- Once through the manually opened front door there is a domestic sized staircase (800mm wide) with **20 steps** going up to the first floor landing
- Once onto the first floor landing it is a 12 metre walk through a connecting link way into the main lounge and reception
- Flooring is commercial grade carpet
- All lights in the lounge are operated via timers with main lights operating from 6am – 11pm switching to night lighting from 11pm – 6am

- The reception desk is 1 metre high
- There is furniture in the lounge: 3 sofas, 14 chairs and 6 coffee tables
- Additional trestle tables and fold-up chairs can be added to this area on request. This could increase seating by another 16 (total seating: max 42)
- There is a study area/dining space on a mezzanine level which seats 20
- There is CCTV in operation in the main entrance and lounge
- There is a TV area with 50" screen and bench seating (up to 15) plus bean bags
- There is a cinema screen available for movies or workshops/talks
- Reception and main lounge closes at 11pm



## Public areas

We have free superfast Wi-Fi available throughout the building with no black spots. All public areas are well lit. Lighting is on permanently or controlled by timers/sensors.

### First floor, front building corridor

From the top of the main staircase coming from the front entrance:

- There are 2 **steps** up to the first-floor corridor to the main accommodation area
- Our corridors are well lit and carpeted. All spot lights are operated by sensors or timers. The main corridor lights are on permanently

### First/ground floor, rear building corridors

- The link way that connects the front building to the rear building is carpeted, with well lit lights operated by motion sensors
- We have a large granite spiral staircase of **16 steps** that connect the first floor to the ground floor. This area is well lit by a 12 bulb chandelier operated by a motion sensor. **There are no lift facilities**
- There are three corridors on the ground floor, two which are tiled with non-slip runner mats, and one carpeted corridor. These corridors are not easily accessible by wheelchair users due to the narrow access and right-angled corners.
- All areas are lit via motion sensors
- CCTV is in operation along two of the three corridors



## Washroom facilities

All bathrooms are well lit and operated by motion sensors.

There are separate male and female washrooms on the first floor of the front building, and a unisex washroom and separate disabled toilet on the ground floor of the rear building

There are 6 showers, 5 toilets and 1 urinal servicing the main accommodation area on the first floor of the front building, which can sleep up to 40 people

There are 3 showers and 3 toilets servicing the rear building which can sleep up to 14.

### Female washroom

The female washroom is set across two levels. 3 showers on the bottom level and 3 toilets up on the mezzanine level (13 steps). Facilities include:

- Non-slip commercial grade flooring
- Automatic taps, hand-dryer, hairdryer, mirrors and sanitary bins



### Male washroom

There are 3 showers, 2 toilets and 1 urinal in the male toilets.

- The washroom area is small with minimal space and no turning area
- The toilet cubicles are small
- The flooring consists of non-slip commercial grade flooring
- Automatic taps hand-dryer, a hairdryer and mirrors are provided



There are unisex toilet and shower facilities on the ground floor of the rear building; 3 toilets, 6 sinks and 3 shower cubicles.

The 5 unisex washroom cubicles are split into the following:

- 2 x toilet + sink
- 1 x toilet + sink + shower cubicle (one step up to shower tray)
- 2 x shower cubicles (one step up to shower tray)
- There is one row of 3 sinks in the public area of the washroom

Facilities include automatic taps, hand dryer, hairdryer, mirrors and sanitary bin

### **Disabled toilet**

There is a single, unisex disabled toilet on the ground floor of the rear building  
Facilities consists of one toilet, a sink, paper towels and a sanitary bin

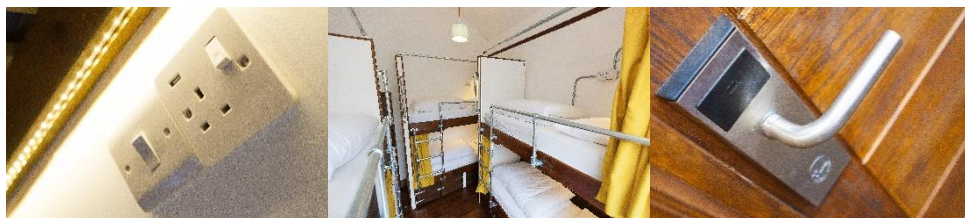
## **Kitchen**

- The kitchen is located on the ground floor of the rear building. There are no lift facilities between the first floor(lounge) and ground floor
- This is a fully equipped kitchen with all utensils, crockery and pots and pans needed to cater for up to 60 people
- The kitchen has 2 x 2 ring hobs and 1 x 4 ring hob, plus small oven, 2 x toasters, 2 x microwaves and 2 x large fridge. Please note we do not have freezer facilities
- The kitchen light is operated via a motion sensor and has tile flooring
- The kitchen is open from 7am-10pm and can only be accessed via a key-card and never accessed between 10pm and 7am unless in an emergency with a staff master key-card



## Bedrooms

- We have 11 guest bedrooms in the building: 1 x 8-bed dorm room, 6 x 6-bed dorm rooms, 1 x 4-bed dorm room and 3 x private rooms.
- Bedrooms are accessed using a key card which is given to students on arrival. Key cards can only open allocated bedroom door
- Bedroom doors can be kept unlocked on request (i.e. for primary school aged children)
- All bedrooms consist of purpose-built pod-beds, each with its own privacy curtain, USB port, socket and reading light and lockable under-bed storage (own padlock required or can be hired from reception)
- Emergency evacuation procedures are posted on the rear of each bedroom door
- All bedrooms are non-smoking
- Each bedroom has an audio smoke and fire detector
- All bedrooms (apart from Room 9 & 10) have wooden flooring
- One bedroom (Room 13) is used by our on-site staff team
- Lighting for each room can be switched on at the entrance to the room. Light switches are placed no higher than 1200mm off the ground
- 50 beds consist of small single mattresses (75cm x 190cm) and 10 beds consist of standard sized mattresses (90cm x 190cm)



### First floor bed rooms (max 44 beds)

- Bedrooms 1 – 7 are situated in the main accommodation area on the first floor of the front building
- Bedrooms 9 – 10 are on the first floor of the rear building located off a side corridor of the main lounge
- We have no lift facilities in the building to transport guests from the ground floor to the first floor

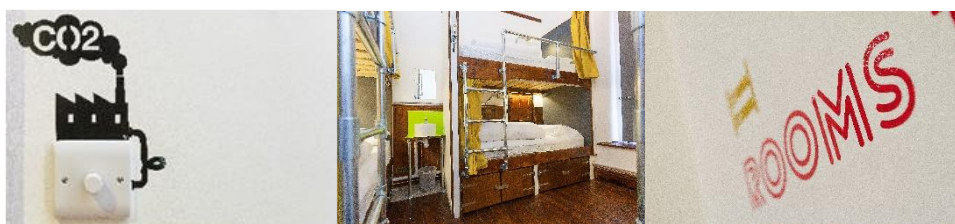


## Ground floor bedrooms (max 10 beds)

- There are three ground floor bedrooms (Rooms 11 – 13) in the rear building, one of which may be suitable for those with restricted mobility.
  - Room 11:
    - There is ground floor access using a rear fire exit (**1 step**)
    - There is a disabled toilet approx. 7 metres away
    - There is a unisex toilet and shower room approx. 9 metres away, with **1 step** up via a right-angle turn (not suitable for wheelchairs). There is **1 step** up to access each shower
    - There is access to the kitchen via courtyard and **1 step**
  - Room 12 is a 4-bed dorm room and is accessed via a hallway that has no wheelchair access due to narrow 90-degree angle turns
  - Room 13 is occupied by on-site Cohort staff

All bedrooms are of varying shapes and sizes. Room sizes are as follows:

Room 1	–	10.7 sqm	(6-bed dorm)
Room 2	–	9.8 sqm	(6-bed dorm)
Room 3	–	7.6 sqm	(twin/double/triple)
Room 4	–	15.6 sqm	(6-bed dorm)
Room 5	–	16.6 sqm	(8-bed dorm)
Room 6	–	13.3 sqm	(6-bed dorm)
Room 7	–	13.3 sqm	(6-bed dorm)
Room 9	–	7 sqm	(single/twin)
Room 10	–	5.2 sqm	(single/twin)
Room 11	–	14 sqm	(6-bed dorm)
Room 12	–	13.2 sqm	(4-bed dorm)
Room 13	–	19.6 sqm	(6-bed dorm)



## Courtyard and dining/laundry area

- The courtyard is located on the ground floor of the rear building. It is a private courtyard and the only access is via the rear spiral staircase
- The courtyard consists of 4 x 8-seater picnic tables. One table has a permanent roof whilst a retractable awning can offer shelter to the other 3 tables
- The courtyard has natural light during the day, and is lit by festoon lighting at night (until 10pm). The lighting is control via smart timers
- The courtyard closes at 10pm
- The courtyard flooring is of paving slabs. Guests are required to take more caution when walking through the courtyard during wet weather
- The courtyard has a wetsuit rack, surfboard rack, bike rack and hot shower
- There are two clothing lines which can be used via a pulley system
- At the far end of the courtyard is an outbuilding which consists of a small dining area (up to 14 people) and a laundry room. There are 2 **steps** into this building
- The laundry room has a metered washing machine and a drying cupboard



## Emergency evacuation exits

There are three emergency evacuation exits in the building:

1. Front of the building (main entrance) – single door exit (760mm wide) leading to a porch and 2 **steps** down onto front courtyard. Opens outwards
2. Ground floor of rear building – double door exit (1630mm wide) with 1 **step** down directly onto a back road. Opens outwards
3. Ground floor of rear building – single door exit (700mm wide) 3 **steps** down directly onto a back road. Open inwards





## **Access to staff**

### **Cohort Trip Coordinator**

Cohort Trip Coordinators works on-site several days a week.

Arrangements can be made for CTC to meet visiting groups on arrival

### **Reception staff**

Reception staff are available on-site from 8am – 11pm daily

### **Overnight on-call staff**

Staff are available overnight for emergency purposes only. Overnight staff can be contacted via the intercom at reception

