



## Art Workshops with Rowena Tarplee

Rowena is an experienced secondary Art teacher and Art practitioner. She studied at Belfast College of Art and Edinburgh College of Art. Her spark for teaching was ignited in the following years while working as an Artist in residence in a small village in South Africa. Rowena has previously taught in a dynamic and exciting Art department in a local secondary school for the last 16 years. She has extensive experience in teaching KS3 Art and Design, GCSE Fine Art, GCSE Photography, A-Level Fine Art and BTEC Level 3 Art and Design. Rowena also thoroughly enjoys working with Primary students and has taught various workshops to students ranging from Reception to Year 6. She prides herself on providing exciting art workshops which encourage students to explore and experiment with freedom, confidence and self-expression. Rowena is always happy to discuss individual requirements and to tailor workshops to best suit your themes and projects for your group.



## Expressive Mark-Making Workshop on Porthmeor Beach with links to Peter Lanyon



\*For a school group, this workshop is usually **£15 pp** but prices may vary depending on your specific requirements, numbers etc. All materials are provided. Please get in touch to discuss.



## Expressive Mark-Making on Porthmeor Beach



In this workshop students create their own tools and paintbrushes out of natural materials such as feathers, seaweed and foliage provided. They experiment with expressive mark-making and texture using ink, charcoal and collage in response to the environment and landscape around them. This will then lead into colour studies using acrylic and oil pastels. Reference to artists such as Maggie Hambling and Peter Lanyon. **All materials provided.**







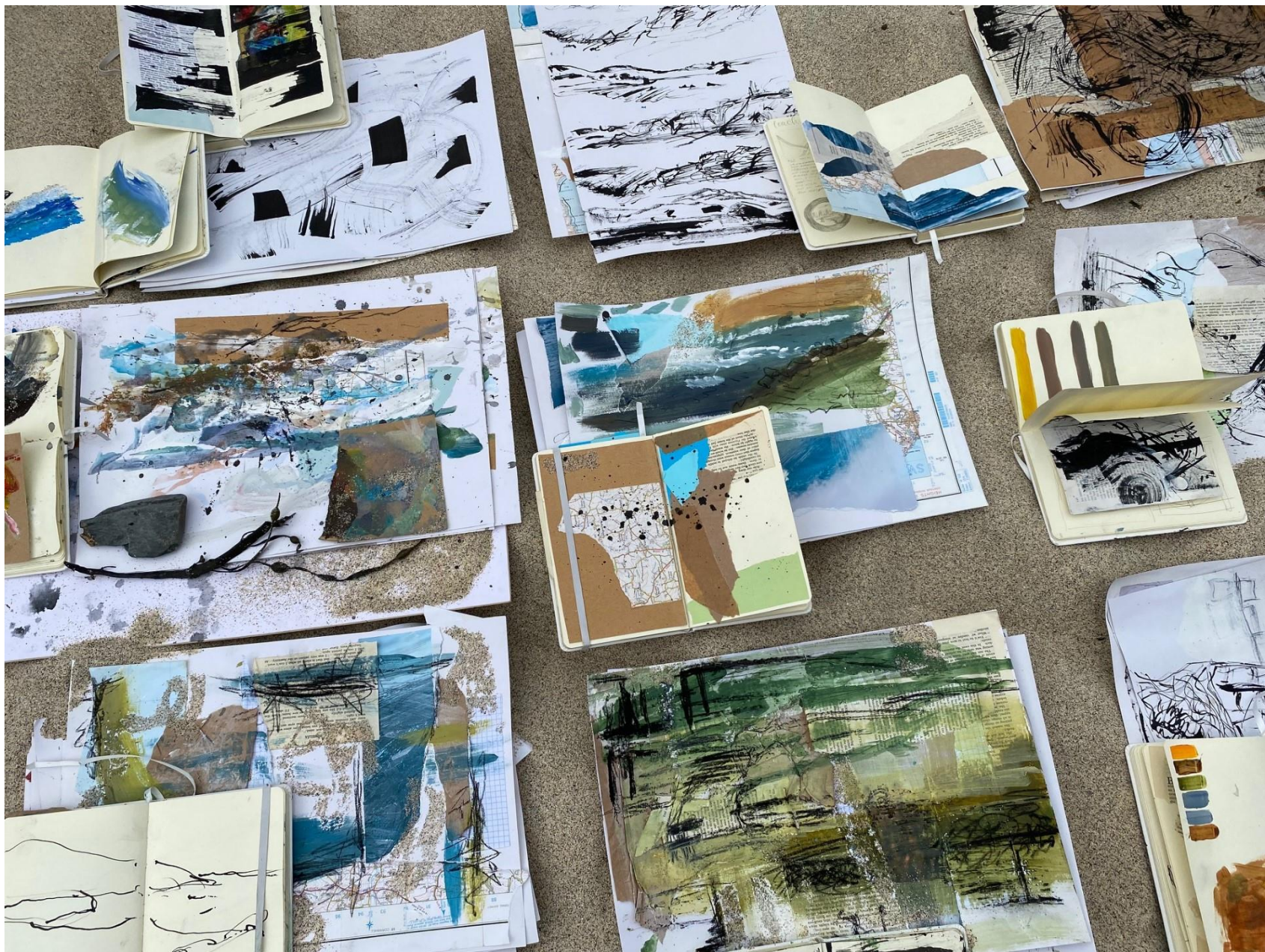
Expressive Mark-Making on Porthmeor  
Beach with Rowena Tarplee





Examples of work produced on my Expressive Mark-Making Workshop with links to Lanyon













Expressive Mark-Making on Porthmeor Beach with Rowena Tarplee





Expressive Mark-Making on Porthmeor Beach with Rowena Tarplee



# Assemblage Workshop inspired by Margaret Mellis

LOCATION: Harbour Beach



Examples of constructions created in the studio and on location at Harbour Beach in the style of Margaret Mellis

Scottish artist Margaret Mellis was a pivotal figure in Modern British Art and was one of the first to settle in St.Ives. She created abstract constructions, paintings, collages and later driftwood assemblages exploring colour, form and structure. In this workshop, students are supplied with a wide variety of found objects including flotsam, jetsam and driftwood. They will then experiment with creating their own interesting abstract compositions in the style of Mellis, inspired by the harbour and with links to the environment. Students make a photographic record of their assemblages to print at a later date for their sketchbooks. Students will then have the opportunity to explore mixed media paper collage in the style of Mellis' paper and card constructs. 2 hrs.

**All materials are supplied.** For school groups this workshop is usually £10 pp / £190 minimum cost of workshop



# Assemblage Workshop inspired by Margaret Mellis



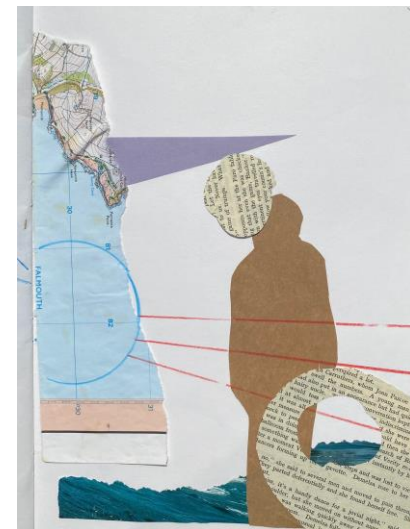
Constructs



Assemblage



Collage







Example of an assemblage created in the style of Margaret Mellis, Rowena Tarplee Workshop

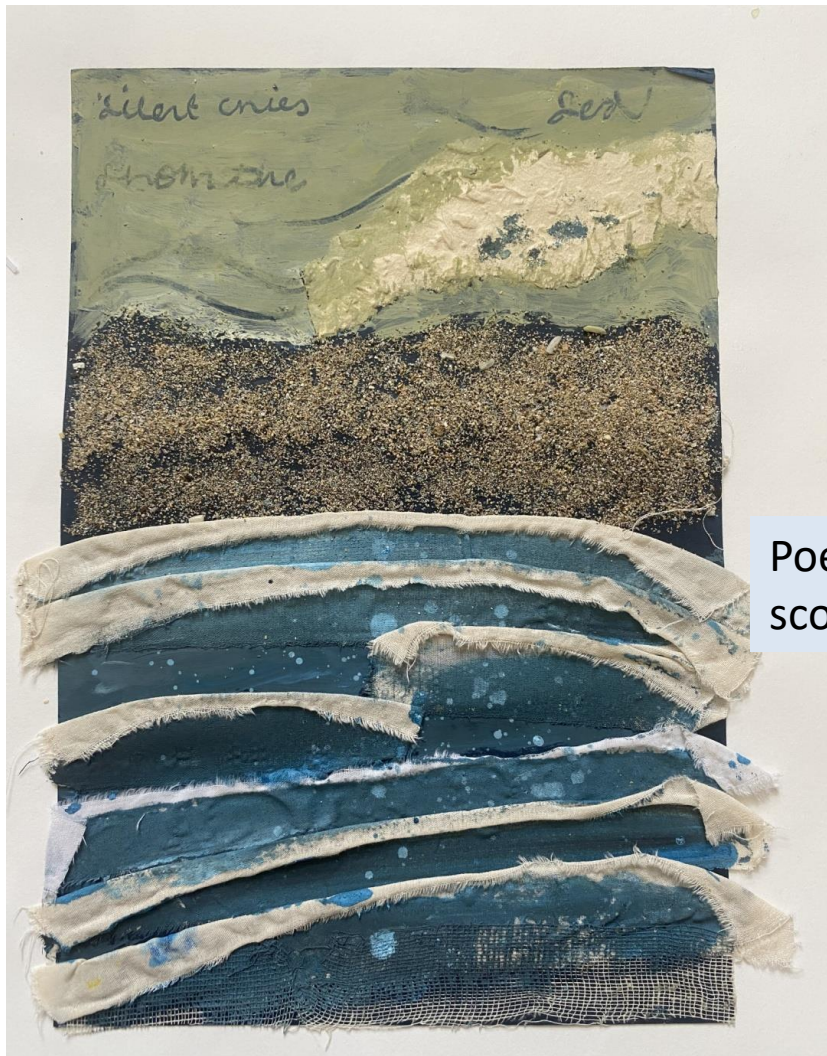




Example of an assemblage created in the style of Margaret Mellis, Rowena Tarplee Workshop



## Mixed Media Textured Landscapes Workshop



Inspired by the local landscape, students explore colour mixing, composition and texture to create an atmospheric mixed media painting. This can also be linked to artists of St.Ives including Peter Lanyon, Sandra Blow and Kurt Jackson.



Poetry and notes  
scored into the paint



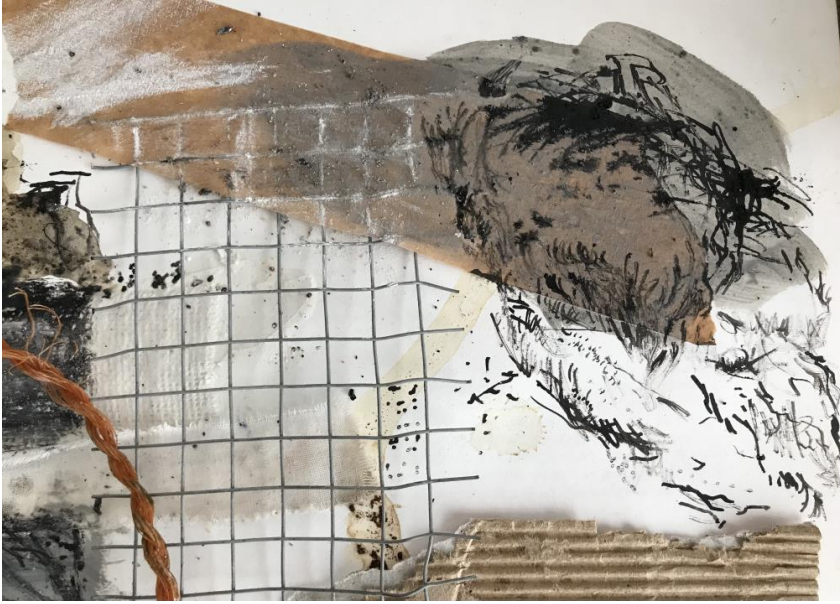
\*For a school group, this workshop is usually £15 pp but prices may vary depending on your specific requirements, numbers etc. All materials are provided. Please get in touch to discuss.







## Textural abstract works in the style of Sandra Blow



Sandra Blow style experiments in which participants have access to sacking, string, rope, metal mesh, card, brown tape, coffee and sand to create interesting textural surfaces. They then apply charcoal, chalk, paint and ink to create an expressive abstract landscape.

\*Modroc also available but I will need to charge a small fee for masks etc!





Mark-making, abstraction, collage and surface





Experimental Painting in the style of Sandra Blow



## Clay Sculpture Workshop

Students will sculpt their own Expressive Clay Mask using air drying clay. Understand facial proportions, modelling techniques and surface decoration. This workshop can be adapted to suit individual interests, projects and themes such as Expressionism, Multi-Cultural Art, Identify and Portraits.



\*For a school group, this workshop is usually **£15 pp** but prices may vary depending on your specific requirements, numbers etc. All materials are provided. Please get in touch to discuss.



# Soap Sculpture Workshop



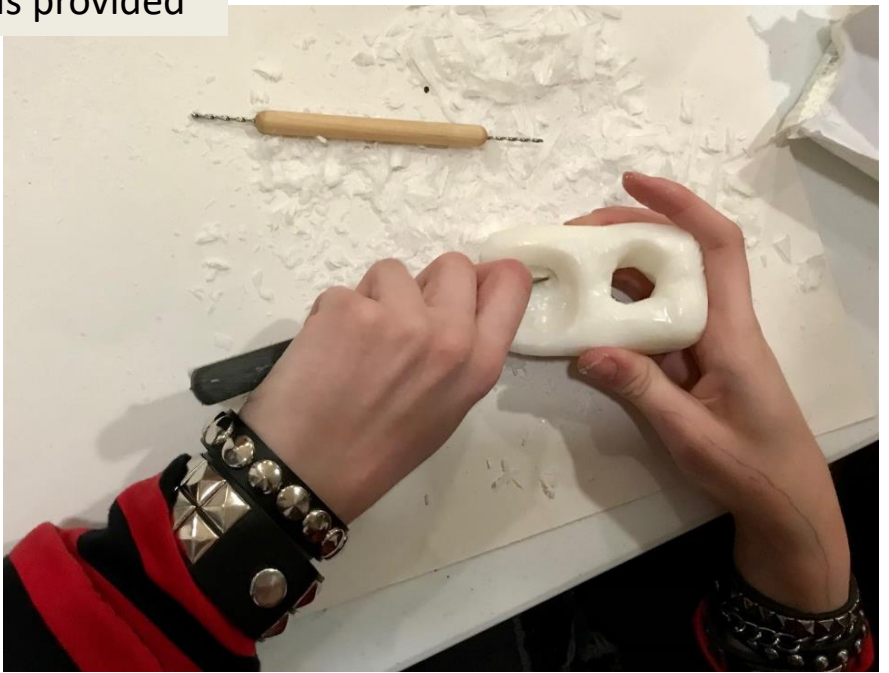
Exploring scale, dimension, form, space, light, perspective, surface and texture based on the work of Barbara Hepworth. Make preliminary sketches in charcoal and pastel, then use carving techniques and specialist tools to sculpt your own abstract sculpture.

\*For a school group, this workshop is usually **£165** but prices may vary depending on your group size. All materials are provided. Please get in touch to discuss.

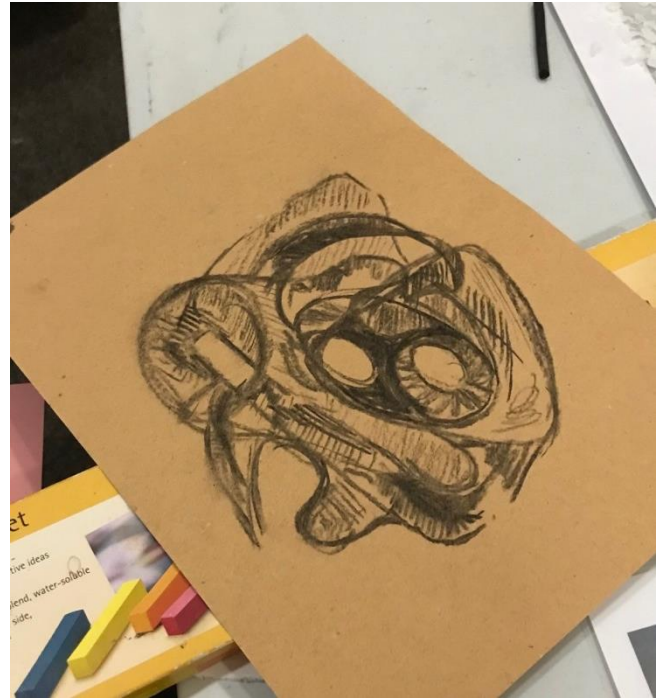




Intricate details can be achieved with the tools provided











## Interactive Sketchbook Tour of The Barbara Hepworth Museum & Gardens

### Drawing and Mixed Media Collage

Explore the magnificent sculptures of Barbara Hepworth on this interactive guided tour of the Museum and Gardens.

Learn about Hepworth's life and works whilst recording ideas and visuals through drawing, mixed media collage and photography.

### Drawing and Sculpture

As above with opportunity to explore sculptural maquettes in paper and plasticine inspired by Hepworth.



Pricing, please note due to group size restrictions at the Hepworth and Tate, most large school groups split into two parties and alternate between the two venues, one in the morning and one in the afternoon. A full day (x2 workshop sessions) is £320. One session is £170. *Please note entrance fees may apply.* Please get in touch to discuss your specific requirements.



## Interactive Sketchbook Tour of Tate, St.Ives

A guided tour including sketchbook activities of the Art work on display at the Tate St.Ives, including the permanent exhibition relating to, *Modern Art and St.Ives* and the exhibition at time of your visit.

Students will be encouraged to develop confidence in ways of looking at art, response and in develop confidence in talking about art.

These photographs show examples of collage and weaving activities in response to the current exhibition, The Casablanca Art School (Sept 2023).

Please get in touch to discuss activities tailored to the exhibition on display at the time of your visit.



Please note due to group size restrictions at the Hepworth and Tate, most large school groups split into two parties and alternate between the two venues, one in the morning and one in the afternoon. A full day (x2 workshop sessions) is £320. One session is £170. *Please note entrance fees may apply.* Please get in touch to discuss your specific requirements. Prices may vary depending on activity.

